



MiTracking Data Portal: What it is and How to Use it

June 6, 2017

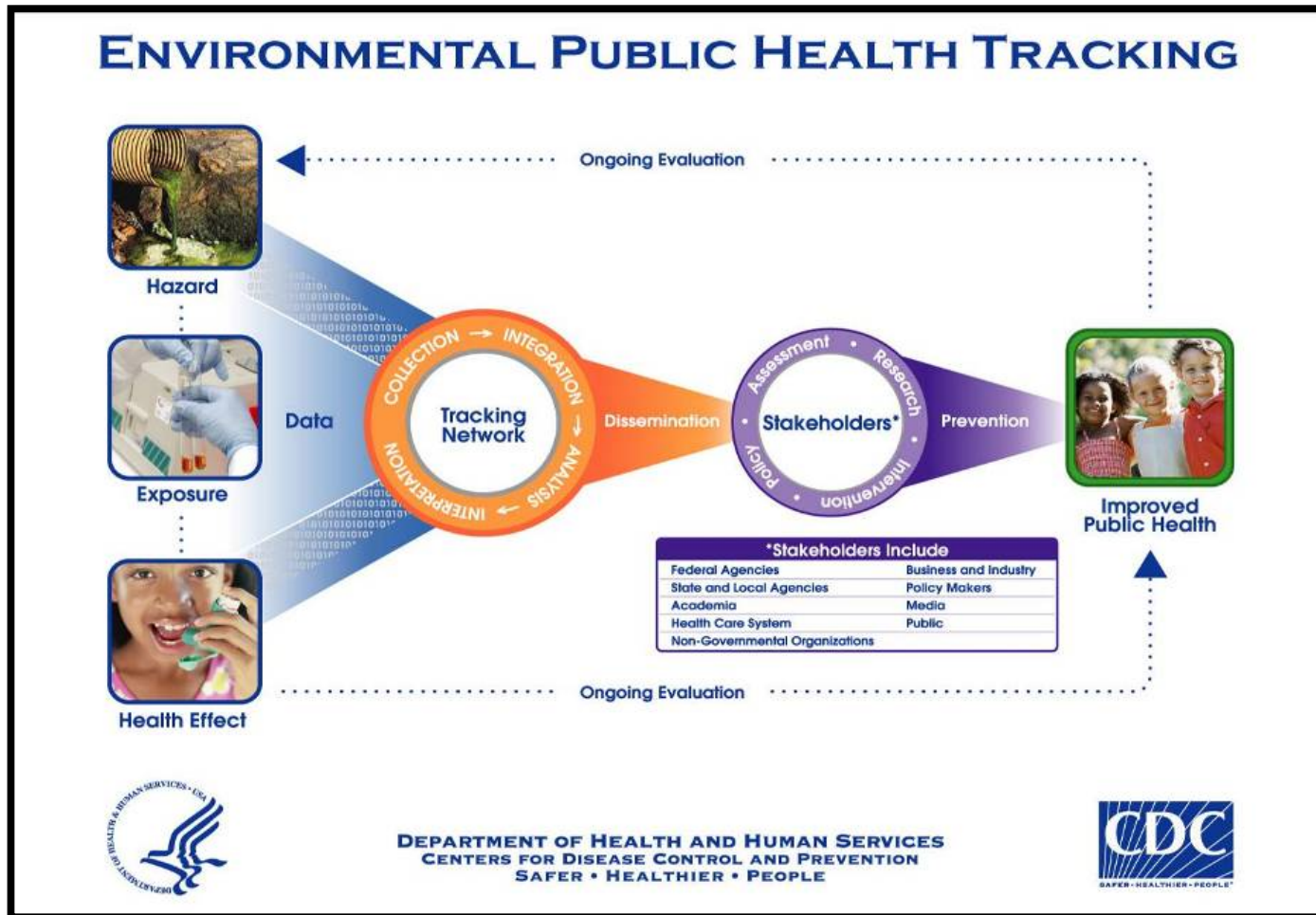
Jill Maras

Overview



- I. Introduction & Background
- II. Data on the Portal
- III. Portal Demonstration
- IV. Next Step: Enhancements

I. What is Tracking?



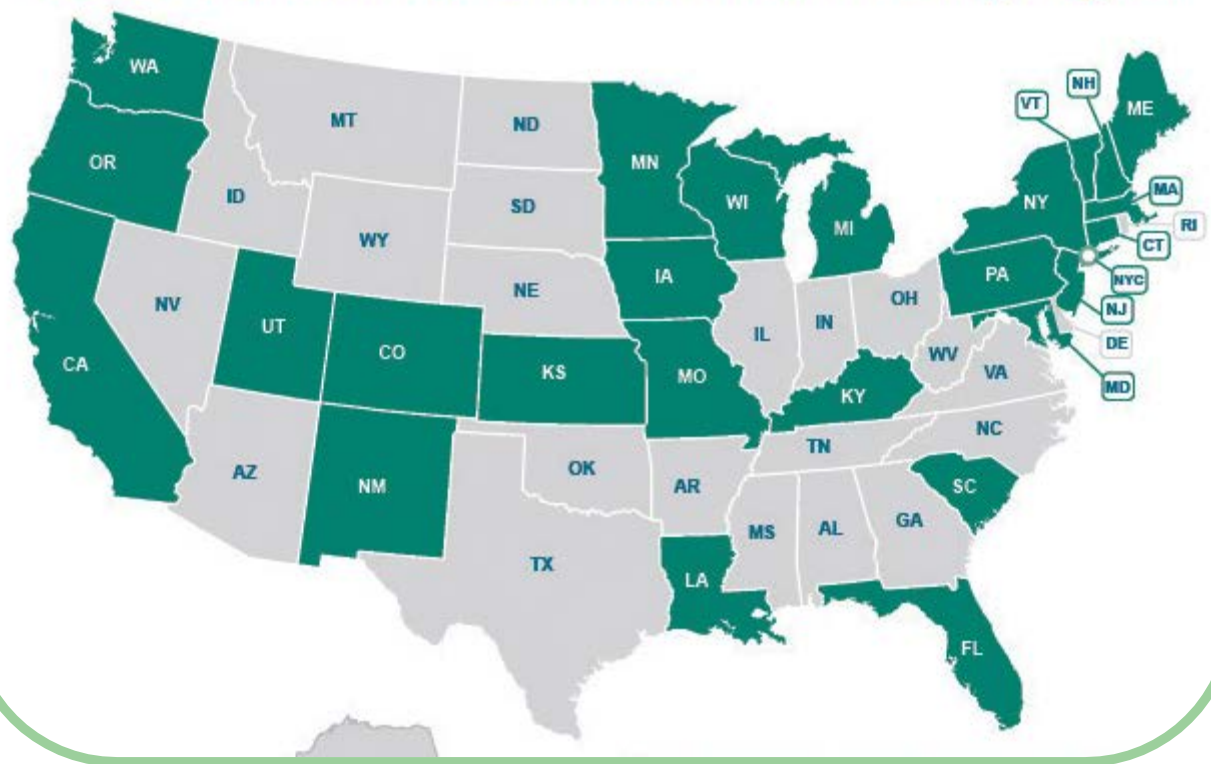
DEPARTMENT OF HEALTH AND HUMAN SERVICES
CENTERS FOR DISEASE CONTROL AND PREVENTION
SAFER • HEALTHIER • PEOPLE



National Tracking Program



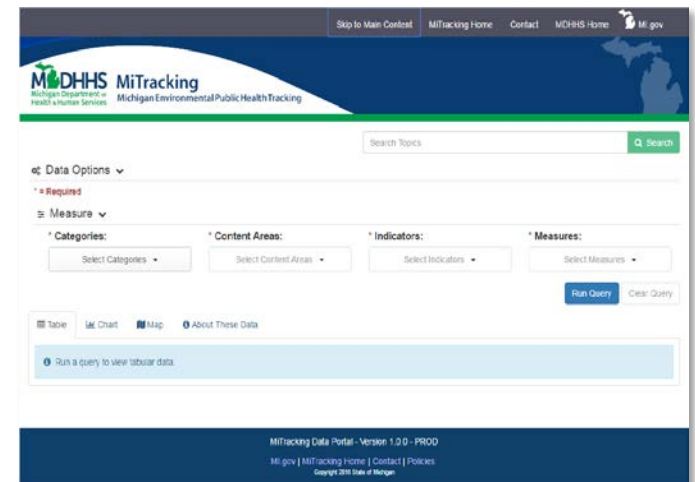
CDC's National Environmental Public Health Tracking Program



MiTracking Data Portal



- Contracted with Kunz, Leigh, and Associates
- Developed public and administrative applications
 - Public side has the query function
 - Administrative side allows MiTracking staff to manage the data and content on the portal



II. Data on the Portal



Current:		Up Next:
Age of Housing	Heart Attacks	Birth Defects
Air Quality	Heat Illness	Childhood Cancers
*Asthma	Lead Exposure	COPD
Cancer	Reproductive and Birth Outcomes	Socioeconomics
Carbon Monoxide Poisoning	Demographics	Lyme Disease?
Drinking Water		Climate Change indicators?

III. Portal Demonstration



MiTracking - Michigan Environmental Public Health Tracking

Welcome

For many years, public health systems across the U.S. faced a knowledge gap about environmental hazards and public health. The Michigan Environmental Health Tracking Program, MiTracking, can help bridge this gap. The MiTracking Program gathers existing Michigan-specific environmental and health data and provides them in one online location. These data can be easily queried on the MiTracking data portal. Results are provided in tables, charts, and maps that can be downloaded, saved, and printed. The data provided by the MiTracking program can create greater awareness of environmental health concerns, and inform public health actions and programs.



Quicklinks

- Metadata
- Training
- Glossary
- Resources



The MiTracking Program is part of the Centers for Disease Control and Prevention's National Tracking Network.

Environmental Topics



- Air Quality
- Drinking Water

Health Conditions



- Asthma
- Cancer
- Carbon Monoxide Poisoning
- Childhood Cancer

IV. Enhancements



What are we doing now?

- New requirements
 - Bug fixes
 - Improvements
 - New developments
- Outreach and Training

Acknowledgments



- MiTracking Advisory Committee
- CDC National Tracking Program
- Kunz, Leigh, and Associates
- Data Stewards and Subject Matter Experts
- Michigan Department of Technology, Management, and Budget
- Center of Shared Solutions

Thank you!



Questions?

Jill Maras, Project Manager

MarasJ@Michigan.gov

www.michigan.gov/mitracking
www.cdc.gov/ephtracking
mdhhs-mitracking@Michigan.gov



Asthma



Asthma is a serious life-long disease that is caused by swelling (inflammation) in the airways that carry oxygen in and out of the lungs. It affects many Michigan residents.

[Go to the Data](#)

People of all ages can get asthma. There is no cure, but symptoms can be prevented and controlled with proper care. You can't outgrow asthma, though some people will have fewer symptoms as they grow older. People with asthma can live normal, active lives.

Asthma Triggers

People who have asthma symptoms start are ca



Data Options ▾

* = Required

Measure ▾

* Categories: ? Health ▾	* Content Areas: ? Asthma ▾	* Indicators: ? Hospitalizations ▾	* Measures: Age-Adjusted Rate of Hospitalization for Asthma per 10,000 Population ▾
---	--	---	--

Geography & Time Periods ▾

* Geographic Level: ? State and/or County ▾	* Geographic Area(s): ? Statewide Only, Alcona, ... (84) ▾	* Year(s): ? 2013 ▾
--	---	--

Other Filters ▾

* Gender(s): All Genders ▾

[Run Query](#) [Clear Query](#) [Save Query](#)



[Table](#)
[Chart](#)
[Map](#)
[About These Data](#)
[Send Feedback](#)

[Edit Data Options](#)

[Download Data](#)

Age-Adjusted Rate of Hospitalization for Asthma per 10,000 Population - Year(s) 2013

Geographic Area ↕	Year ↕	Gender ↕	Age-Adjusted Rate ↕
Statewide Only	2013	All Genders	12.3
Alcona**	2013	All Genders	Suppressed
Alger	2013	All Genders	10.1
Allegan	2013	All Genders	5.4

A'			8
A			2.6
A			11.7

[Table](#)
[Chart](#)
[Map](#)
[About These Data](#)
[Send Feedback](#)

[Edit Data Options](#)

[Download Data](#)

[Save Chart](#)

[Hide Legend](#)

[Hide Title](#)

[Hide Values](#)

Age-Adjusted Rate of Hospitalization for Asthma per 10,000 Population - Year(s) 2013

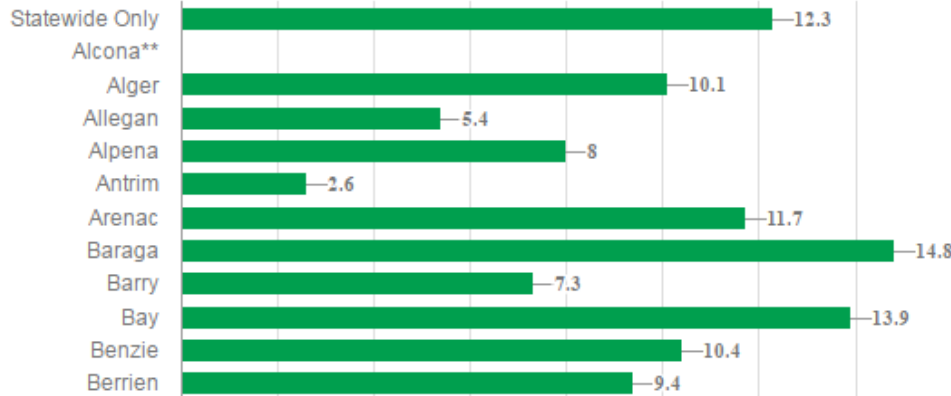
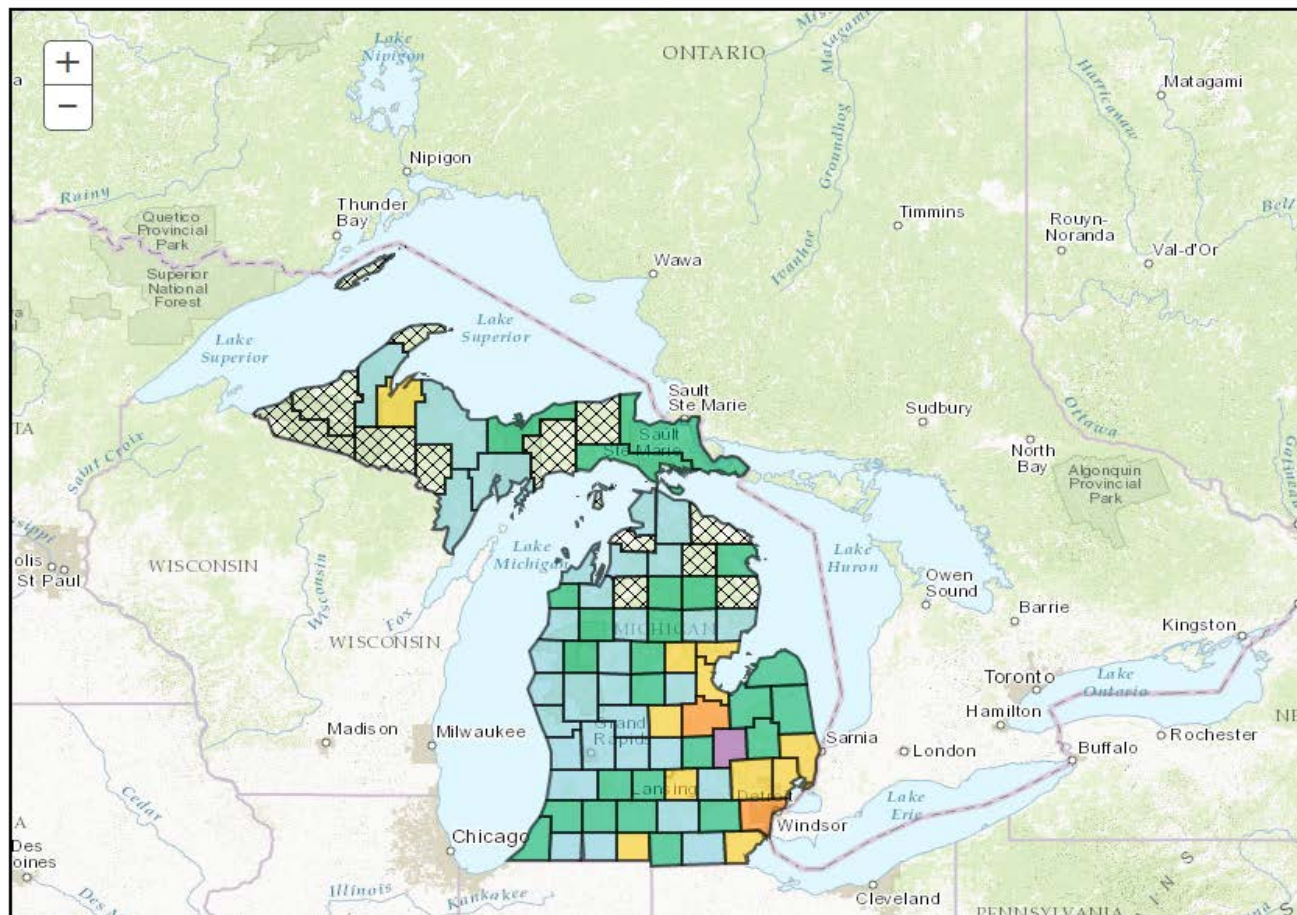




Table Chart Map About These Data Send Feedback

Edit Data Options Download Data Save Map Hide Legend Hide Title

Age-Adjusted Rate of Hospitalization for Asthma per 10,000 Population - Year(s) 2013



Legend

- 2.2 - <6.84
- 6.84 - <11.48
- 11.48 - <16.12
- 16.12 - <20.76
- 20.76 - 25.4
- No Results
- Suppressed

Units: Rate per 10,000 People